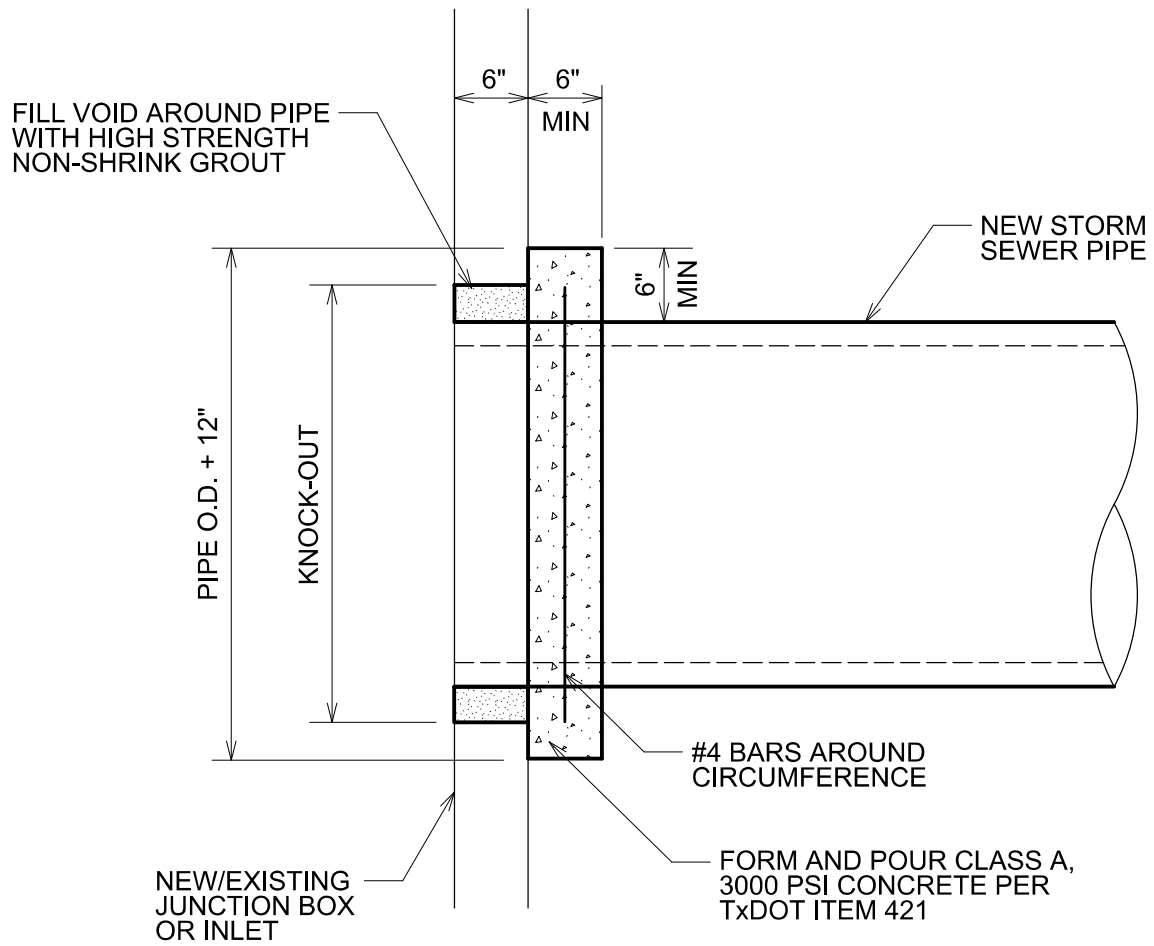


GENERAL NOTES

1. NEW PIPE TO BE SET FLUSH WITH INSIDE WALL OF STRUCTURE.



GROUTED STORM SEWER CONNECTION DETAIL

STANDARD CONSTRUCTION DETAILS

DATE: 07/20/21

REVISED
DATE: 07/20/21

STM - 3